

DUBAI CREEK  
HARBOUR

17 ICON BAY  
FLOOR PLANS



# 17 ICON BAY

# DUBAI CREEK HARBOUR

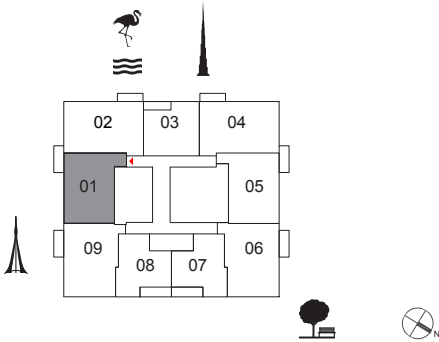
## 2 BEDROOM

UNIT 01 | LEVEL 2-15

Suite Area 999.9 sq.ft. / 92.89 sq.m.

Balcony Area 72.7 sq.ft. / 6.75 sq.m.

Total Area 1,072.5 sq.ft. / 99.64 sq.m.



**FLOOR PLAN** 1. All dimensions are in imperial and metric, and measured from finish to finish excluding construction tolerances. 2. All materials, dimensions, and drawings are approximate only. 3. Information is subject to change without notice, at developer's absolute discretion. 4. Actual area may vary from the stated area. 5. Drawings not to scale. 6. All images used are for illustrative purposes only and do not represent the actual size, features, specifications, fittings, and furnishings. 7. The developer reserves the right to make revisions / alterations, at it's absolute discretion, without any liability whatsoever.



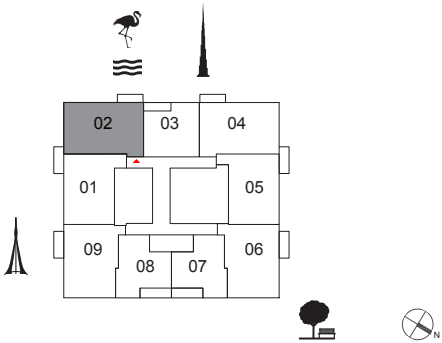
## 2 BEDROOM

UNIT 02 | LEVEL 2-22

Suite Area 1035.5 sq.ft. / 96.20 sq.m.

Balcony Area 80.1 sq.ft. / 7.44 sq.m.

Total Area 1115.6 sq.ft. / 103.64 sq.m.



**FLOOR PLAN** 1. All dimensions are in imperial and metric, and measured from finish to finish excluding construction tolerances. 2. All materials, dimensions, and drawings are approximate only. 3. Information is subject to change without notice, at developer's absolute discretion. 4. Actual area may vary from the stated area. 5. Drawings not to scale. 6. All images used are for illustrative purposes only and do not represent the actual size, features, specifications, fittings, and furnishings. 7. The developer reserves the right to make revisions / alterations, at it's absolute discretion, without any liability whatsoever.

# 17 ICON BAY

# DUBAI CREEK HARBOUR

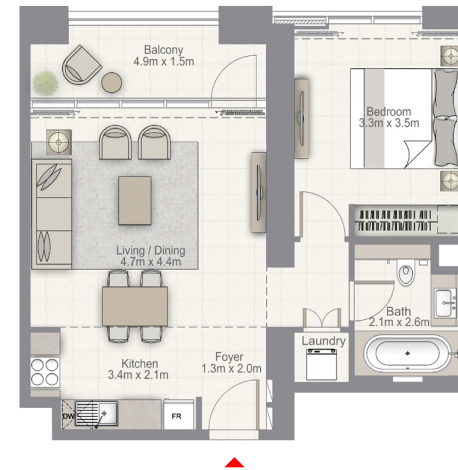
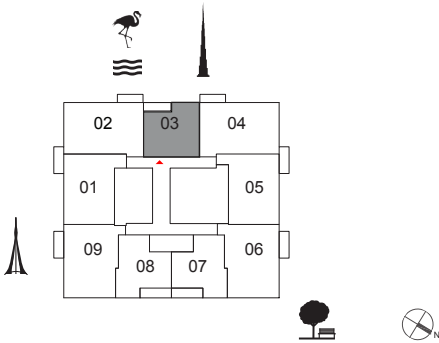
## 1 BEDROOM

UNIT 03 | LEVEL 2-22

Suite Area 648.0 sq.ft. / 60.20 sq.m.

Balcony Area 88.4 sq.ft. / 8.21 sq.m.

Total Area 736.4 sq.ft. / 68.41 sq.m.



**FLOOR PLAN** 1. All dimensions are in imperial and metric, and measured from finish to finish excluding construction tolerances. 2. All materials, dimensions, and drawings are approximate only. 3. Information is subject to change without notice, at developer's absolute discretion. 4. Actual area may vary from the stated area. 5. Drawings not to scale. 6. All images used are for illustrative purposes only and do not represent the actual size, features, specifications, fittings, and furnishings. 7. The developer reserves the right to make revisions / alterations, at it's absolute discretion, without any liability whatsoever.



# 17 ICON BAY

# DUBAI CREEK HARBOUR

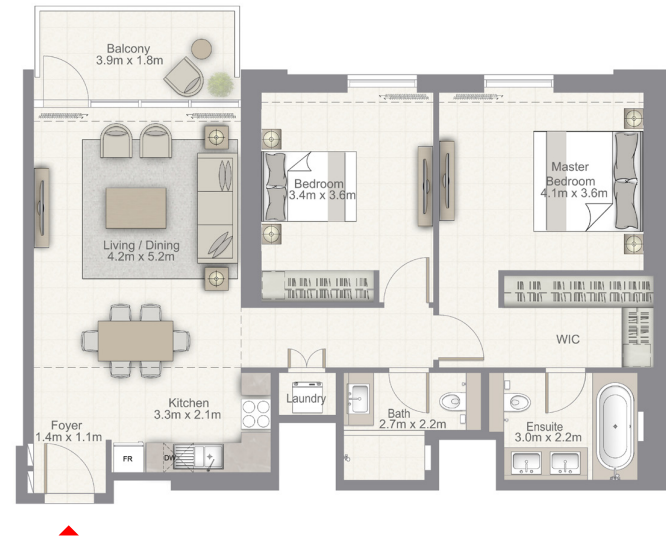
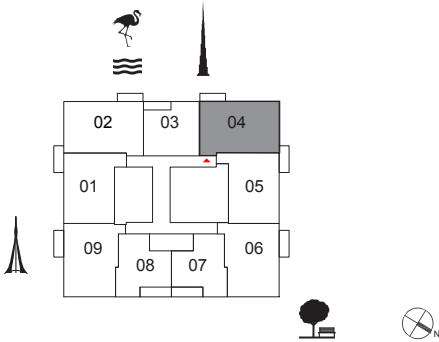
## 2 BEDROOM

UNIT 04 | LEVEL 2-22

Suite Area 1036.0 sq.ft. / 96.25 sq.m.

Balcony Area 80.1 sq.ft. / 7.44 sq.m.

Total Area 1116.1 sq.ft. / 103.69 sq.m.



**FLOOR PLAN** 1. All dimensions are in imperial and metric, and measured from finish to finish excluding construction tolerances. 2. All materials, dimensions, and drawings are approximate only. 3. Information is subject to change without notice, at developer's absolute discretion. 4. Actual area may vary from the stated area. 5. Drawings not to scale. 6. All images used are for illustrative purposes only and do not represent the actual size, features, specifications, fittings, and furnishings. 7. The developer reserves the right to make revisions / alterations, at it's absolute discretion, without any liability whatsoever.



# 17 ICON BAY

# DUBAI CREEK HARBOUR

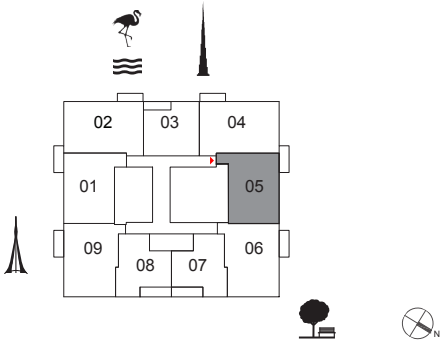
## 2 BEDROOM

UNIT 05 | LEVEL 2-22

Suite Area 997.0 sq.ft. / 92.62 sq.m.

Balcony Area 72.7 sq.ft. / 6.75 sq.m.

Total Area 1069.6 sq.ft. / 99.37 sq.m.



**FLOOR PLAN** 1. All dimensions are in imperial and metric, and measured from finish to finish excluding construction tolerances. 2. All materials, dimensions, and drawings are approximate only. 3. Information is subject to change without notice, at developer's absolute discretion. 4. Actual area may vary from the stated area. 5. Drawings not to scale. 6. All images used are for illustrative purposes only and do not represent the actual size, features, specifications, fittings, and furnishings. 7. The developer reserves the right to make revisions / alterations, at its absolute discretion, without any liability whatsoever.



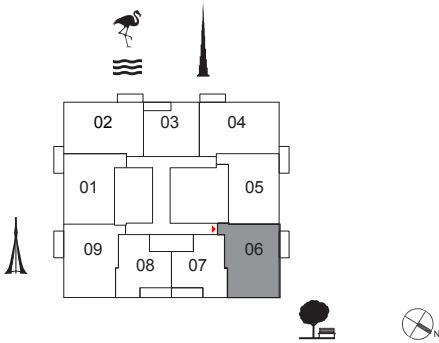
## 2 BEDROOM

UNIT 06 | LEVEL 2-15

Suite Area 1019.9 sq.ft. / 94.75 sq.m.

Balcony Area 72.7 sq.ft. / 6.75 sq.m.

Total Area 1092.5 sq.ft. / 101.50 sq.m.



**FLOOR PLAN** 1. All dimensions are in imperial and metric, and measured from finish to finish excluding construction tolerances. 2. All materials, dimensions, and drawings are approximate only. 3. Information is subject to change without notice, at developer's absolute discretion. 4. Actual area may vary from the stated area. 5. Drawings not to scale. 6. All images used are for illustrative purposes only and do not represent the actual size, features, specifications, fittings, and furnishings. 7. The developer reserves the right to make revisions / alterations, at it's absolute discretion, without any liability whatsoever.

# 17 ICON BAY

# DUBAI CREEK HARBOUR

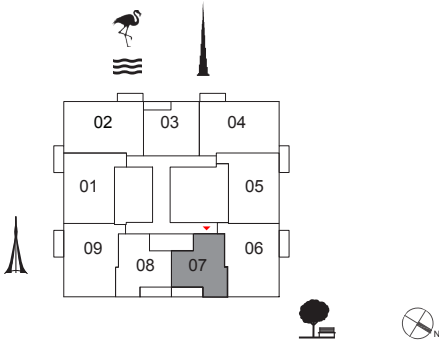
## 1 BEDROOM

UNIT 07 | LEVEL 2-15

Suite Area 669.7 sq.ft. / 62.22 sq.m.

Balcony Area 90.2 sq.ft. / 8.38 sq.m.

Total Area 759.9 sq.ft. / 70.60 sq.m.



**FLOOR PLAN** 1. All dimensions are in imperial and metric, and measured from finish to finish excluding construction tolerances. 2. All materials, dimensions, and drawings are approximate only. 3. Information is subject to change without notice, at developer's absolute discretion. 4. Actual area may vary from the stated area. 5. Drawings not to scale. 6. All images used are for illustrative purposes only and do not represent the actual size, features, specifications, fittings, and furnishings. 7. The developer reserves the right to make revisions / alterations, at it's absolute discretion, without any liability whatsoever.





# 17 ICON BAY

# DUBAI CREEK HARBOUR

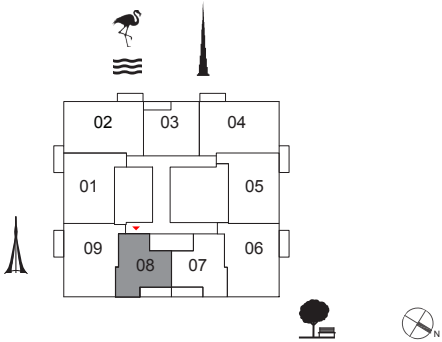
## 1 BEDROOM

UNIT 08 | LEVEL 2-15

Suite Area 669.7 sq.ft. / 62.22 sq.m.

Balcony Area 90.2 sq.ft. / 8.38 sq.m.

Total Area 759.9 sq.ft. / 70.60 sq.m.



**FLOOR PLAN** 1. All dimensions are in imperial and metric, and measured from finish to finish excluding construction tolerances. 2. All materials, dimensions, and drawings are approximate only. 3. Information is subject to change without notice, at developer's absolute discretion. 4. Actual area may vary from the stated area. 5. Drawings not to scale. 6. All images used are for illustrative purposes only and do not represent the actual size, features, specifications, fittings, and furnishings. 7. The developer reserves the right to make revisions / alterations, at its absolute discretion, without any liability whatsoever.



# 17 ICON BAY

# DUBAI CREEK HARBOUR

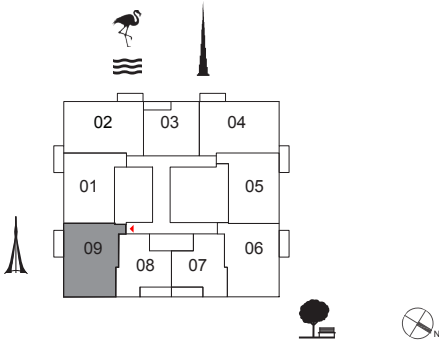
## 2 BEDROOM

UNIT 09 | LEVEL 2-15

Suite Area 1018.7 sq.ft. / 94.64 sq.m.

Balcony Area 72.7 sq.ft. / 6.75 sq.m.

Total Area 1091.4 sq.ft. / 101.39 sq.m.



**FLOOR PLAN** 1. All dimensions are in imperial and metric, and measured from finish to finish excluding construction tolerances. 2. All materials, dimensions, and drawings are approximate only. 3. Information is subject to change without notice, at developer's absolute discretion. 4. Actual area may vary from the stated area. 5. Drawings not to scale. 6. All images used are for illustrative purposes only and do not represent the actual size, features, specifications, fittings, and furnishings. 7. The developer reserves the right to make revisions / alterations, at it's absolute discretion, without any liability whatsoever.



# 17 ICON BAY

# DUBAI CREEK HARBOUR

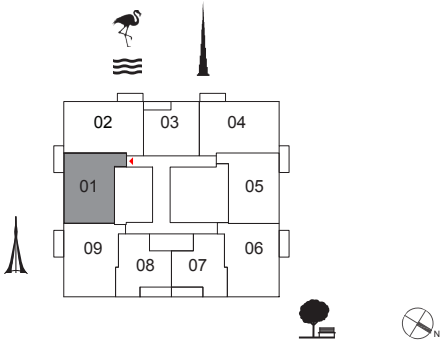
## 2 BEDROOM

UNIT 01 | LEVEL 16-22

Suite Area 1000.4 sq.ft. / 92.94 sq.m.

Balcony Area 72.7 sq.ft. / 6.75 sq.m.

Total Area 1073.1 sq.ft. / 99.69 sq.m.



**FLOOR PLAN** 1. All dimensions are in imperial and metric, and measured from finish to finish excluding construction tolerances. 2. All materials, dimensions, and drawings are approximate only. 3. Information is subject to change without notice, at developer's absolute discretion. 4. Actual area may vary from the stated area. 5. Drawings not to scale. 6. All images used are for illustrative purposes only and do not represent the actual size, features, specifications, fittings, and furnishings. 7. The developer reserves the right to make revisions / alterations, at its absolute discretion, without any liability whatsoever.



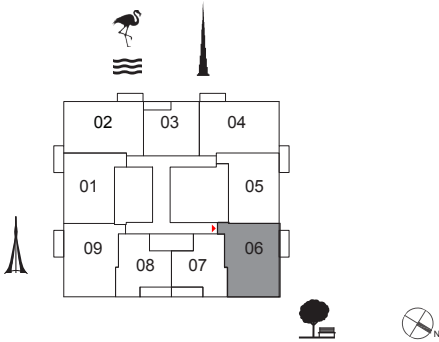
## 2 BEDROOM

UNIT 06 | LEVEL 16-22

Suite Area 1017.1 sq.ft. / 94.49 sq.m.

Balcony Area 72.7 sq.ft. / 6.75 sq.m.

Total Area 1089.7 sq.ft. / 101.24 sq.m.



**FLOOR PLAN** 1. All dimensions are in imperial and metric, and measured from finish to finish excluding construction tolerances. 2. All materials, dimensions, and drawings are approximate only. 3. Information is subject to change without notice, at developer's absolute discretion. 4. Actual area may vary from the stated area. 5. Drawings not to scale. 6. All images used are for illustrative purposes only and do not represent the actual size, features, specifications, fittings, and furnishings. 7. The developer reserves the right to make revisions / alterations, at it's absolute discretion, without any liability whatsoever.

# 17 ICON BAY

# DUBAI CREEK HARBOUR

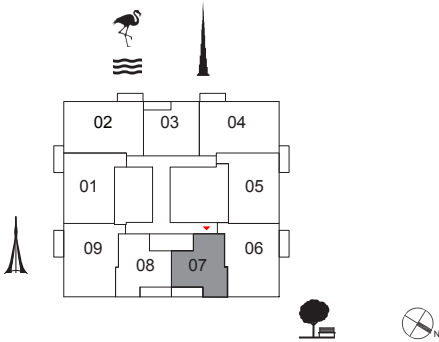
## 1 BEDROOM

UNIT 07 | LEVEL 16-22

Suite Area 670.2 sq.ft. / 62.26 sq.m.

Balcony Area 90.2 sq.ft. / 8.38 sq.m.

Total Area 760.4 sq.ft. / 70.64 sq.m.



**FLOOR PLAN** 1. All dimensions are in imperial and metric, and measured from finish to finish excluding construction tolerances. 2. All materials, dimensions, and drawings are approximate only. 3. Information is subject to change without notice, at developer's absolute discretion. 4. Actual area may vary from the stated area. 5. Drawings not to scale. 6. All images used are for illustrative purposes only and do not represent the actual size, features, specifications, fittings, and furnishings. 7. The developer reserves the right to make revisions / alterations, at it's absolute discretion, without any liability whatsoever.



# 17 ICON BAY

# DUBAI CREEK HARBOUR

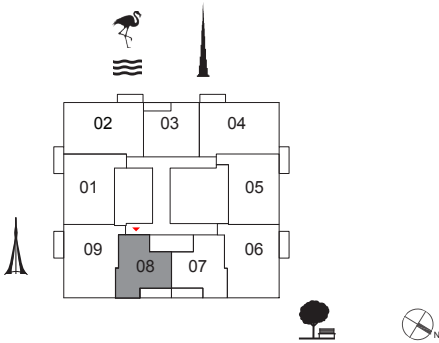
## 1 BEDROOM

UNIT 08 | LEVEL 16-22

Suite Area 670.2 sq.ft. / 62.26 sq.m.

Balcony Area 90.2 sq.ft. / 8.38 sq.m.

Total Area 760.4 sq.ft. / 70.64 sq.m.



**FLOOR PLAN** 1. All dimensions are in imperial and metric, and measured from finish to finish excluding construction tolerances. 2. All materials, dimensions, and drawings are approximate only. 3. Information is subject to change without notice, at developer's absolute discretion. 4. Actual area may vary from the stated area. 5. Drawings not to scale. 6. All images used are for illustrative purposes only and do not represent the actual size, features, specifications, fittings, and furnishings. 7. The developer reserves the right to make revisions / alterations, at its absolute discretion, without any liability whatsoever.



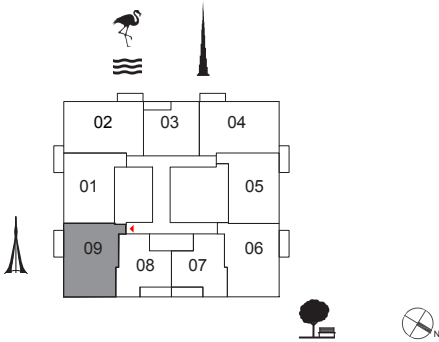
## 2 BEDROOM

UNIT 09 | LEVEL 16-22

Suite Area 1015.9 sq.ft. / 94.38 sq.m.

Balcony Area 72.7 sq.ft. / 6.75 sq.m.

Total Area 1088.6 sq.ft. / 101.13 sq.m.



**FLOOR PLAN** 1. All dimensions are in imperial and metric, and measured from finish to finish excluding construction tolerances. 2. All materials, dimensions, and drawings are approximate only. 3. Information is subject to change without notice, at developer's absolute discretion. 4. Actual area may vary from the stated area. 5. Drawings not to scale. 6. All images used are for illustrative purposes only and do not represent the actual size, features, specifications, fittings, and furnishings. 7. The developer reserves the right to make revisions / alterations, at it's absolute discretion, without any liability whatsoever.

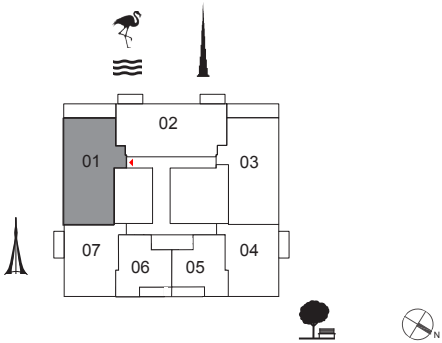
## 3 BEDROOM

UNIT 01 | LEVEL 24-41

Suite Area 1477.5 sq.ft. / 137.26 sq.m.

Balcony Area 191.1 sq.ft. / 17.75 sq.m.

Total Area 1668.5 sq.ft. / 155.01 sq.m.



**FLOOR PLAN** 1. All dimensions are in imperial and metric, and measured from finish to finish excluding construction tolerances. 2. All materials, dimensions, and drawings are approximate only. 3. Information is subject to change without notice, at developer's absolute discretion. 4. Actual area may vary from the stated area. 5. Drawings not to scale. 6. All images used are for illustrative purposes only and do not represent the actual size, features, specifications, fittings, and furnishings. 7. The developer reserves the right to make revisions / alterations, at it's absolute discretion, without any liability whatsoever.



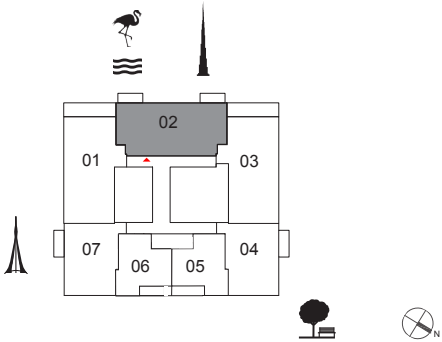
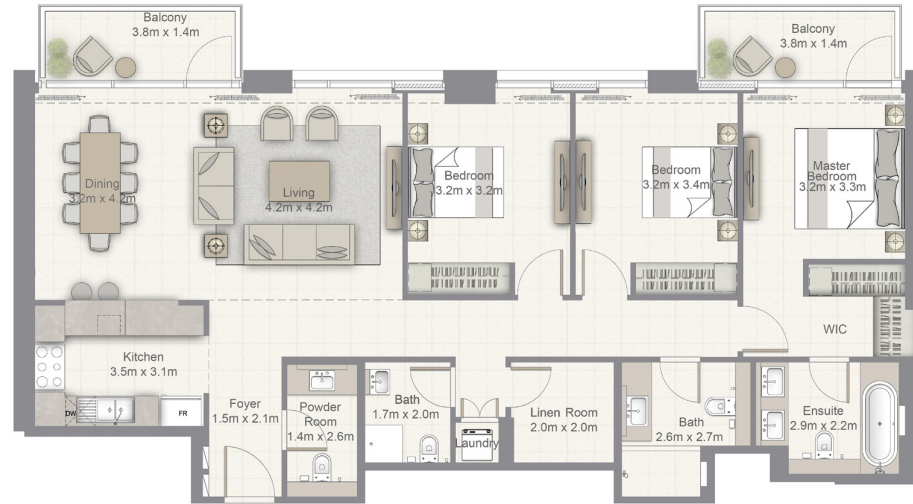
## 3 BEDROOM

UNIT 02 | LEVEL 24-41

Suite Area 1465.9 sq.ft. / 136.19 sq.m.

Balcony Area 122.6 sq.ft. / 11.39 sq.m.

Total Area 1588.5 sq.ft. / 147.58 sq.m.



**FLOOR PLAN** 1. All dimensions are in imperial and metric, and measured from finish to finish excluding construction tolerances. 2. All materials, dimensions, and drawings are approximate only. 3. Information is subject to change without notice, at developer's absolute discretion. 4. Actual area may vary from the stated area. 5. Drawings not to scale. 6. All images used are for illustrative purposes only and do not represent the actual size, features, specifications, fittings, and furnishings. 7. The developer reserves the right to make revisions / alterations, at it's absolute discretion, without any liability whatsoever.

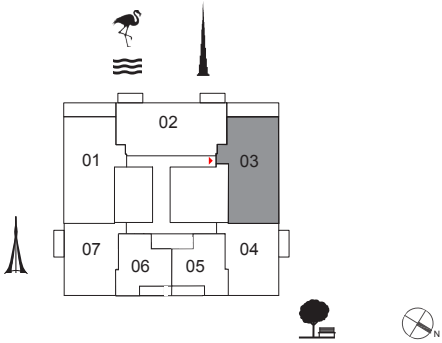
## 3 BEDROOM

UNIT 03 | LEVEL 24-41

Suite Area 1477.8 sq.ft. / 137.29 sq.m.

Balcony Area 191.1 sq.ft. / 17.75 sq.m.

Total Area 1668.8 sq.ft. / 155.04 sq.m.



**FLOOR PLAN** 1. All dimensions are in imperial and metric, and measured from finish to finish excluding construction tolerances. 2. All materials, dimensions, and drawings are approximate only. 3. Information is subject to change without notice, at developer's absolute discretion. 4. Actual area may vary from the stated area. 5. Drawings not to scale. 6. All images used are for illustrative purposes only and do not represent the actual size, features, specifications, fittings, and furnishings. 7. The developer reserves the right to make revisions / alterations, at its absolute discretion, without any liability whatsoever.

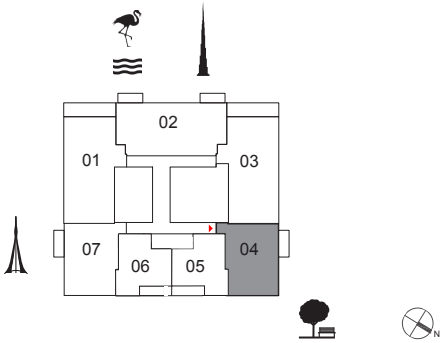
## 2 BEDROOM

UNIT 04 | LEVEL 24-41

Suite Area 1015.6 sq.ft. / 94.35 sq.m.

Balcony Area 72.7 sq.ft. / 6.75 sq.m.

Total Area 1088.2 sq.ft. / 101.10 sq.m.



**FLOOR PLAN** 1. All dimensions are in imperial and metric, and measured from finish to finish excluding construction tolerances. 2. All materials, dimensions, and drawings are approximate only. 3. Information is subject to change without notice, at developer's absolute discretion. 4. Actual area may vary from the stated area. 5. Drawings not to scale. 6. All images used are for illustrative purposes only and do not represent the actual size, features, specifications, fittings, and furnishings. 7. The developer reserves the right to make revisions / alterations, at it's absolute discretion, without any liability whatsoever.

# 17 ICON BAY

# DUBAI CREEK HARBOUR

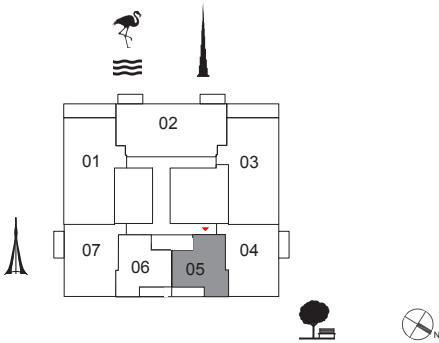
## 1 BEDROOM

UNIT 05 | LEVEL 24-41

Suite Area 670.2 sq.ft. / 62.26 sq.m.

Balcony Area 90.2 sq.ft. / 8.38 sq.m.

Total Area 760.4 sq.ft. / 70.64 sq.m.



**FLOOR PLAN** 1. All dimensions are in imperial and metric, and measured from finish to finish excluding construction tolerances. 2. All materials, dimensions, and drawings are approximate only. 3. Information is subject to change without notice, at developer's absolute discretion. 4. Actual area may vary from the stated area. 5. Drawings not to scale. 6. All images used are for illustrative purposes only and do not represent the actual size, features, specifications, fittings, and furnishings. 7. The developer reserves the right to make revisions / alterations, at it's absolute discretion, without any liability whatsoever.



# 17 ICON BAY

# DUBAI CREEK HARBOUR

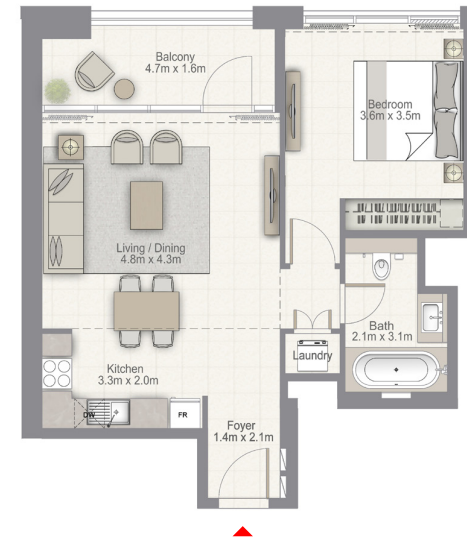
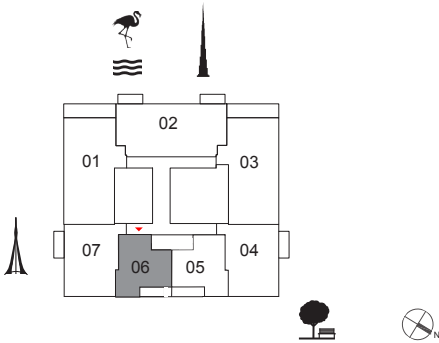
## 1 BEDROOM

UNIT 06 | LEVEL 24-41

Suite Area 670.2 sq.ft. / 62.26 sq.m.

Balcony Area 90.2 sq.ft. / 8.38 sq.m.

Total Area 760.4 sq.ft. / 70.64 sq.m.



**FLOOR PLAN** 1. All dimensions are in imperial and metric, and measured from finish to finish excluding construction tolerances. 2. All materials, dimensions, and drawings are approximate only. 3. Information is subject to change without notice, at developer's absolute discretion. 4. Actual area may vary from the stated area. 5. Drawings not to scale. 6. All images used are for illustrative purposes only and do not represent the actual size, features, specifications, fittings, and furnishings. 7. The developer reserves the right to make revisions / alterations, at its absolute discretion, without any liability whatsoever.



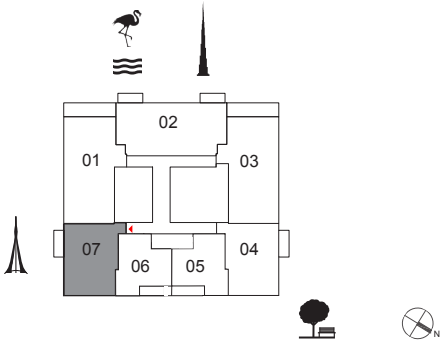
## 2 BEDROOM

UNIT 07 | LEVEL 24-41

Suite Area 1014.4 sq.ft. / 94.24 sq.m.

Balcony Area 72.7 sq.ft. / 6.75 sq.m.

Total Area 1087.1 sq.ft. / 100.99 sq.m.



**FLOOR PLAN** 1. All dimensions are in imperial and metric, and measured from finish to finish excluding construction tolerances. 2. All materials, dimensions, and drawings are approximate only. 3. Information is subject to change without notice, at developer's absolute discretion. 4. Actual area may vary from the stated area. 5. Drawings not to scale. 6. All images used are for illustrative purposes only and do not represent the actual size, features, specifications, fittings, and furnishings. 7. The developer reserves the right to make revisions / alterations, at it's absolute discretion, without any liability whatsoever.