

DUBAI HILLS  
ESTATE

# SIDRA 3

FLOOR PLANS



EMAAR



MERAAS

SIDRA 3

VILLA 1

3 Bedroom  
Total Built Up Area: 3,100 Sq Ft



Ground Floor



First Floor

DUBAI HILLS  
ESTATE

**FLOOR PLAN** 1. All dimensions are in imperial and metric, and measured from finish to finish excluding construction tolerances. 2. All materials, dimensions, and drawings are approximate only. 3. Information is subject to change without notice, at developer's absolute discretion. 4. Actual area may vary from the stated area. 5. Drawings not to scale. 6. All images used are for illustrative purposes only and do not represent the actual size, features, specifications, fittings, and furnishings. 7. The developer reserves the right to make revisions / alterations, at it's absolute discretion, without any liability whatsoever.



SIDRA 3

VILLA 3

4 Bedroom  
Total Built Up Area: 3,533 Sq Ft



Ground Floor



First Floor

DUBAI HILLS  
ESTATE

**FLOOR PLAN** 1. All dimensions are in imperial and metric, and measured from finish to finish excluding construction tolerances. 2. All materials, dimensions, and drawings are approximate only. 3. Information is subject to change without notice, at developer's absolute discretion. 4. Actual area may vary from the stated area. 5. Drawings not to scale. 6. All images used are for illustrative purposes only and do not represent the actual size, features, specifications, fittings, and furnishings. 7. The developer reserves the right to make revisions / alterations, at it's absolute discretion, without any liability whatsoever.



SIDRA 3

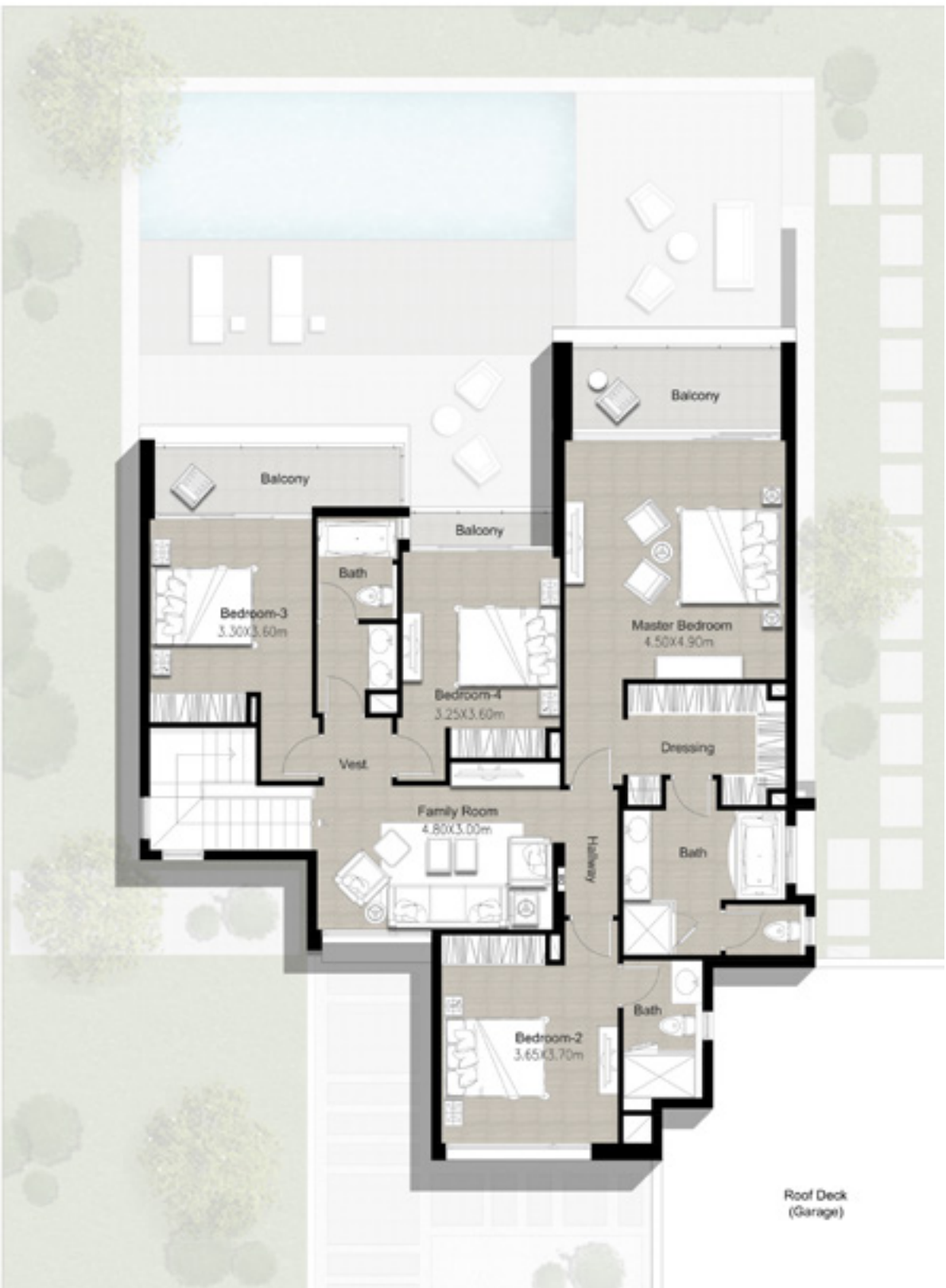
DUBAI HILLS  
ESTATE

VILLA 5

5 Bedroom  
Total Built Up Area: 4,109 Sq Ft



Ground Floor



First Floor

**FLOOR PLAN** 1. All dimensions are in imperial and metric, and measured from finish to finish excluding construction tolerances. 2. All materials, dimensions, and drawings are approximate only. 3. Information is subject to change without notice, at developer's absolute discretion. 4. Actual area may vary from the stated area. 5. Drawings not to scale. 6. All images used are for illustrative purposes only and do not represent the actual size, features, specifications, fittings, and furnishings. 7. The developer reserves the right to make revisions / alterations, at it's absolute discretion, without any liability whatsoever.